
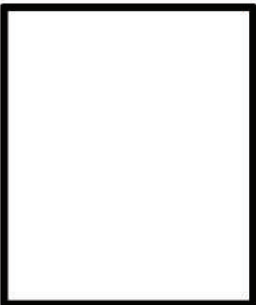

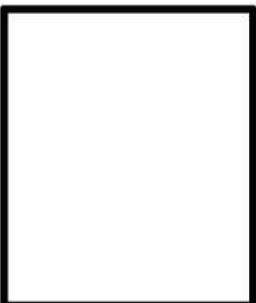


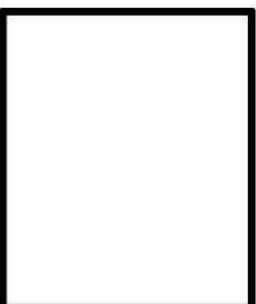
ខ

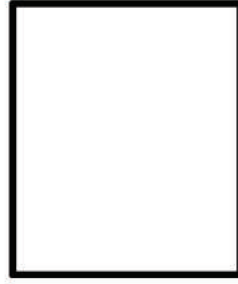
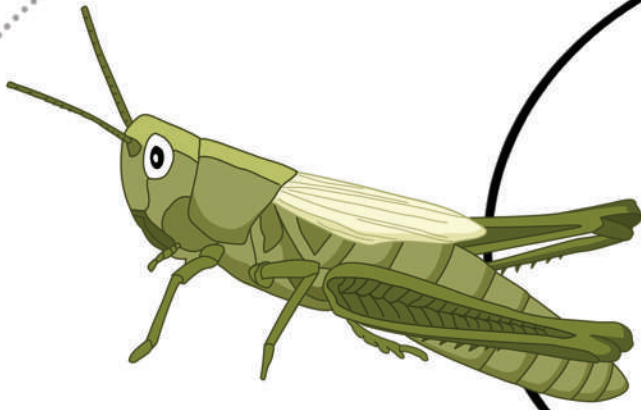


ខ



ខ

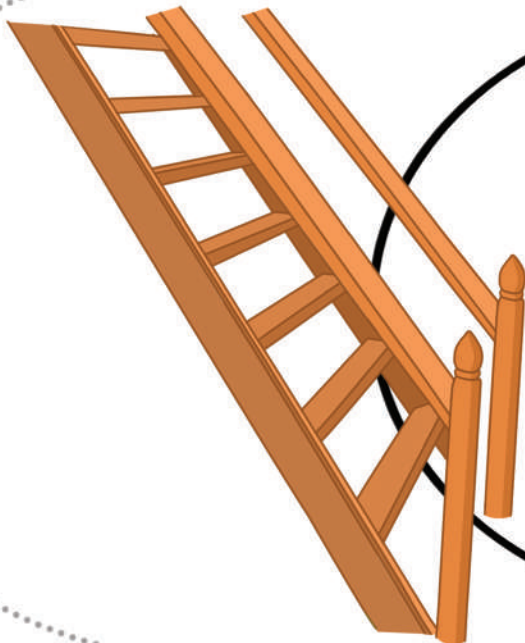




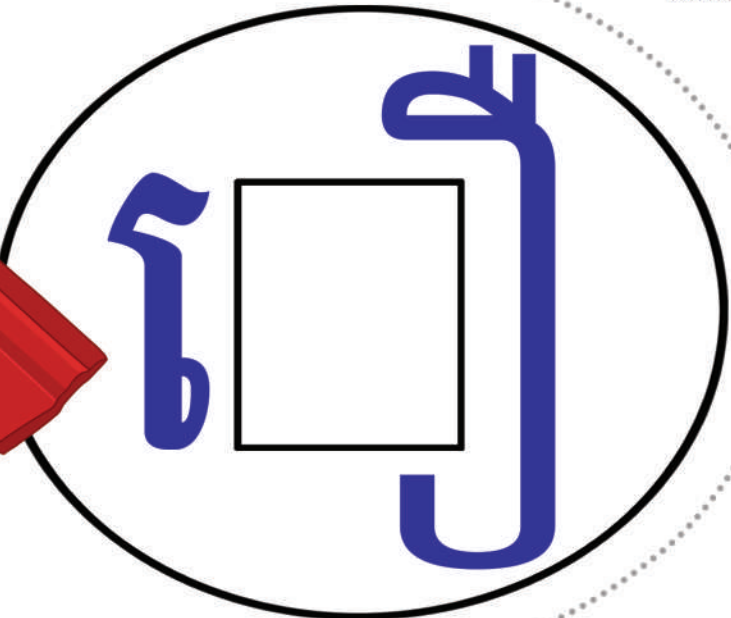
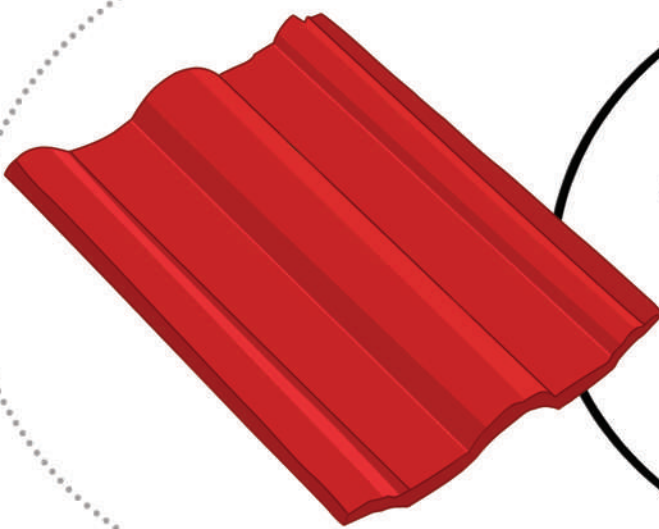
ប



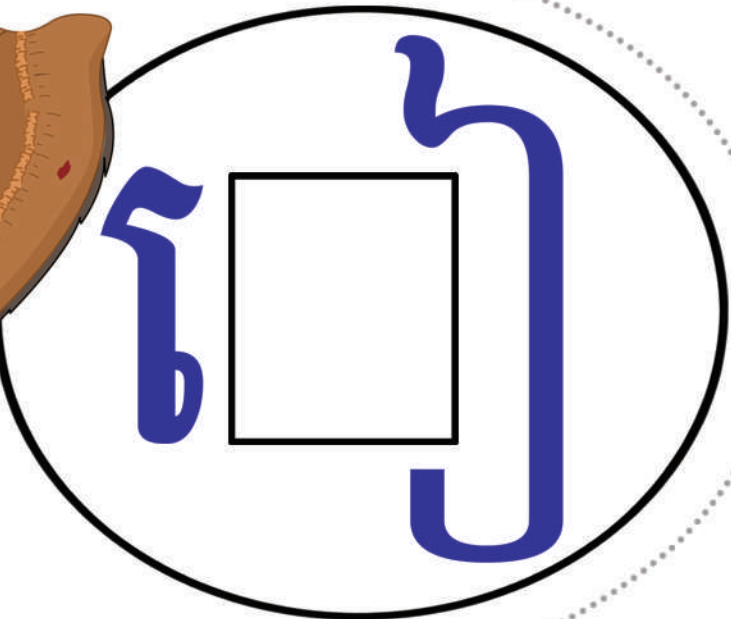
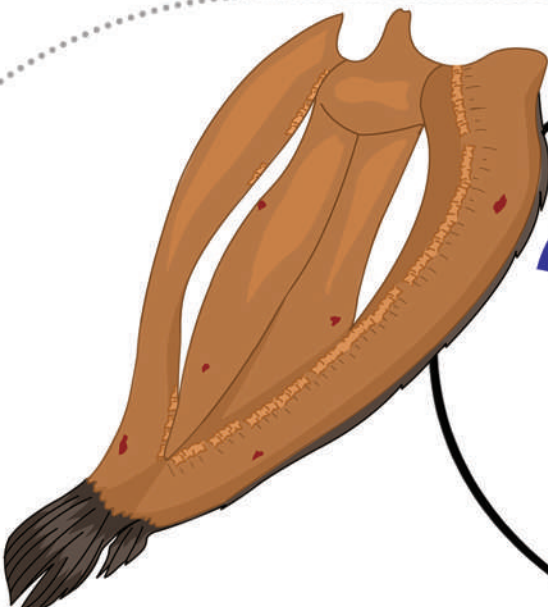
ឃ



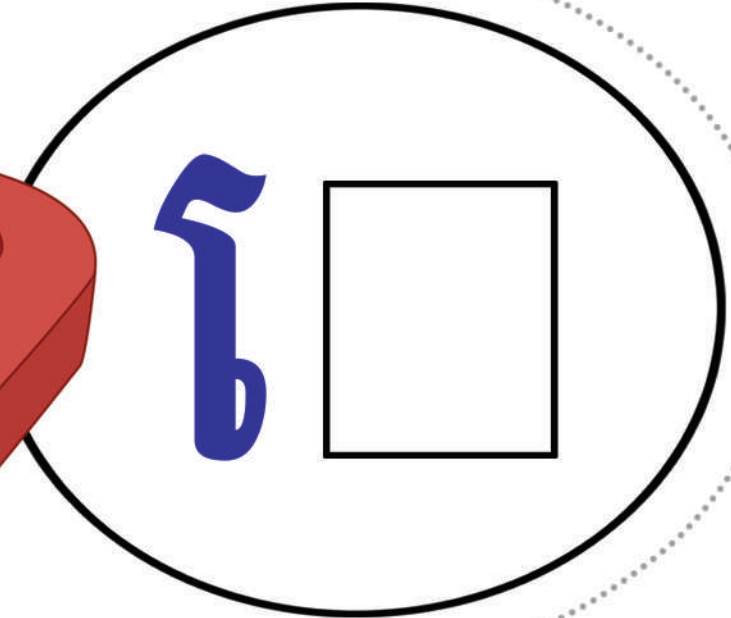
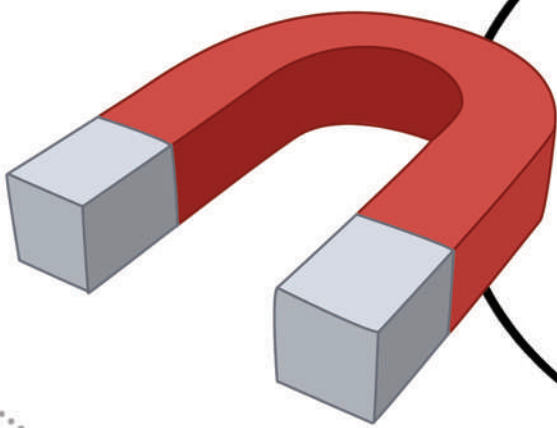
ឆ
៧




A red corrugated metal sheet is shown on the left. To its right, within a solid black circle, is a blue Khmer character 'រ' followed by a square box for writing practice. The entire scene is enclosed in a dotted circle.



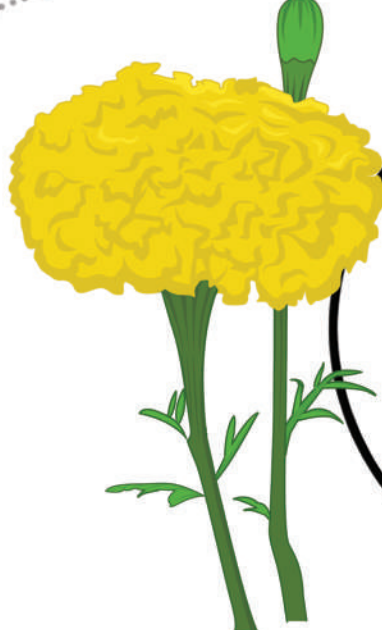
A brown fish is shown on the left. To its right, within a solid black circle, is a blue Khmer character 'រ' followed by a square box for writing practice. The entire scene is enclosed in a dotted circle.



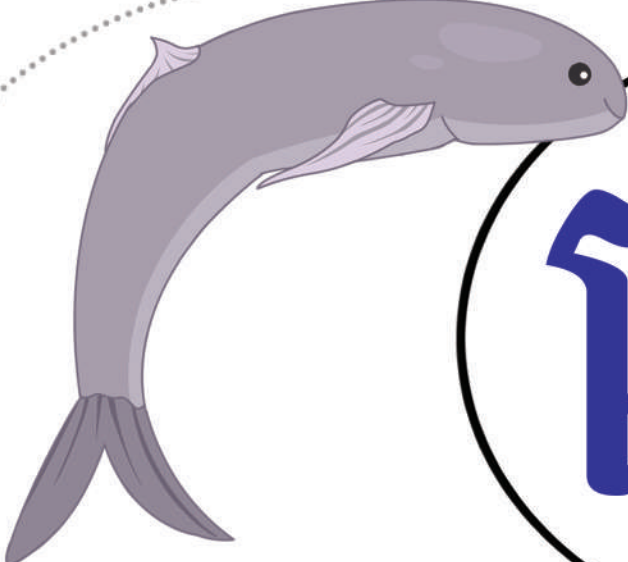
A red horseshoe magnet with two grey poles is shown on the left. To its right, within a solid black circle, is a blue Khmer character 'រ' followed by a square box for writing practice. The entire scene is enclosed in a dotted circle.



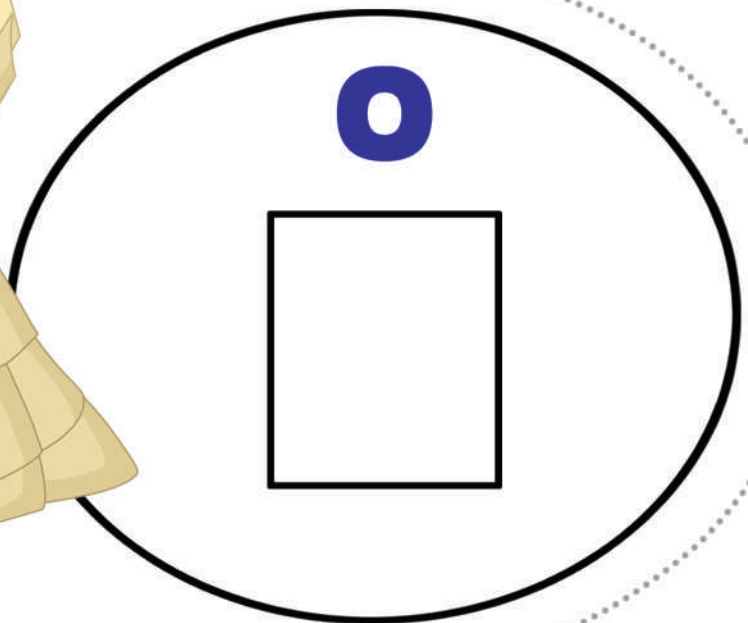
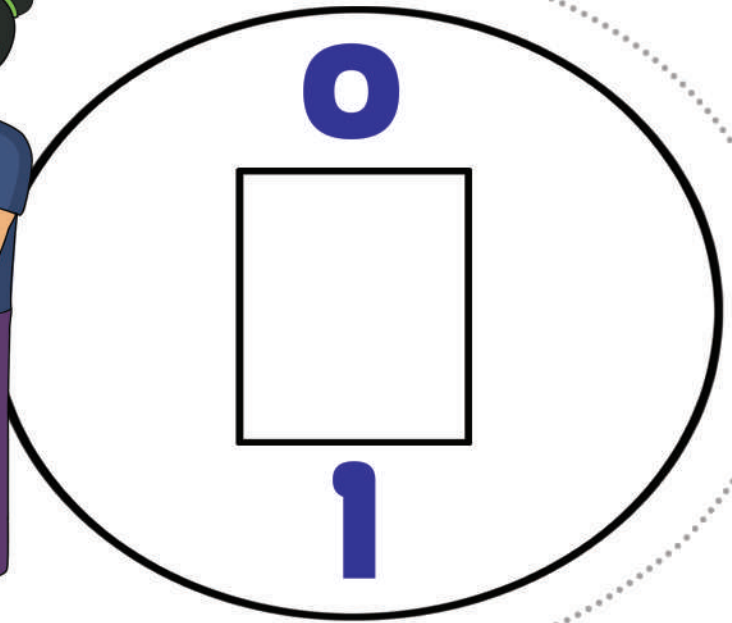
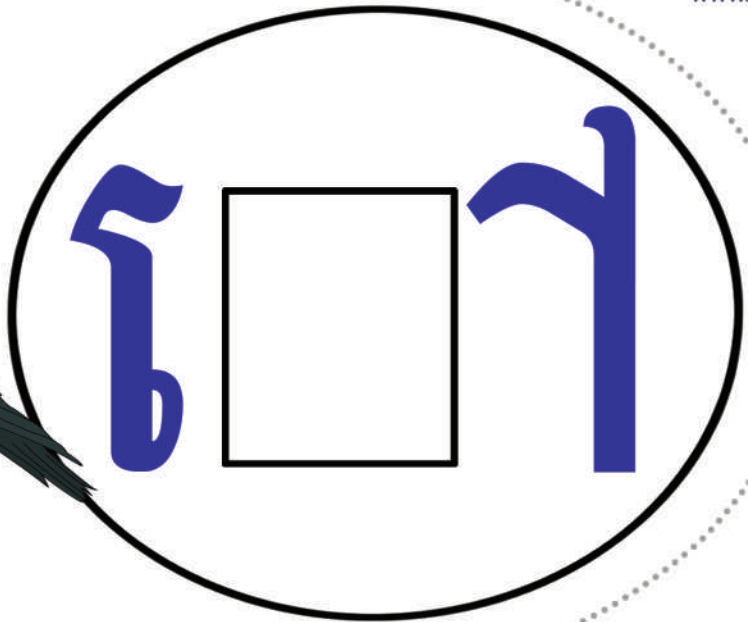
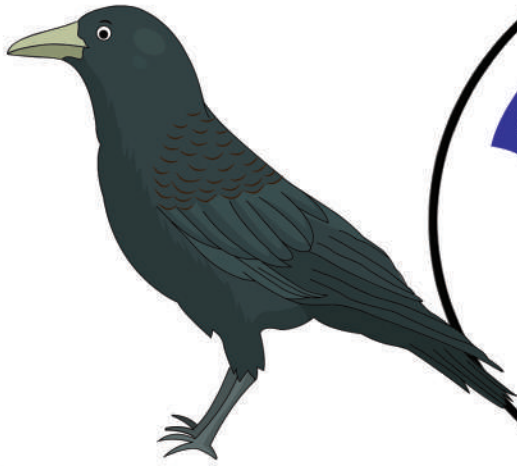
វ
រ
□

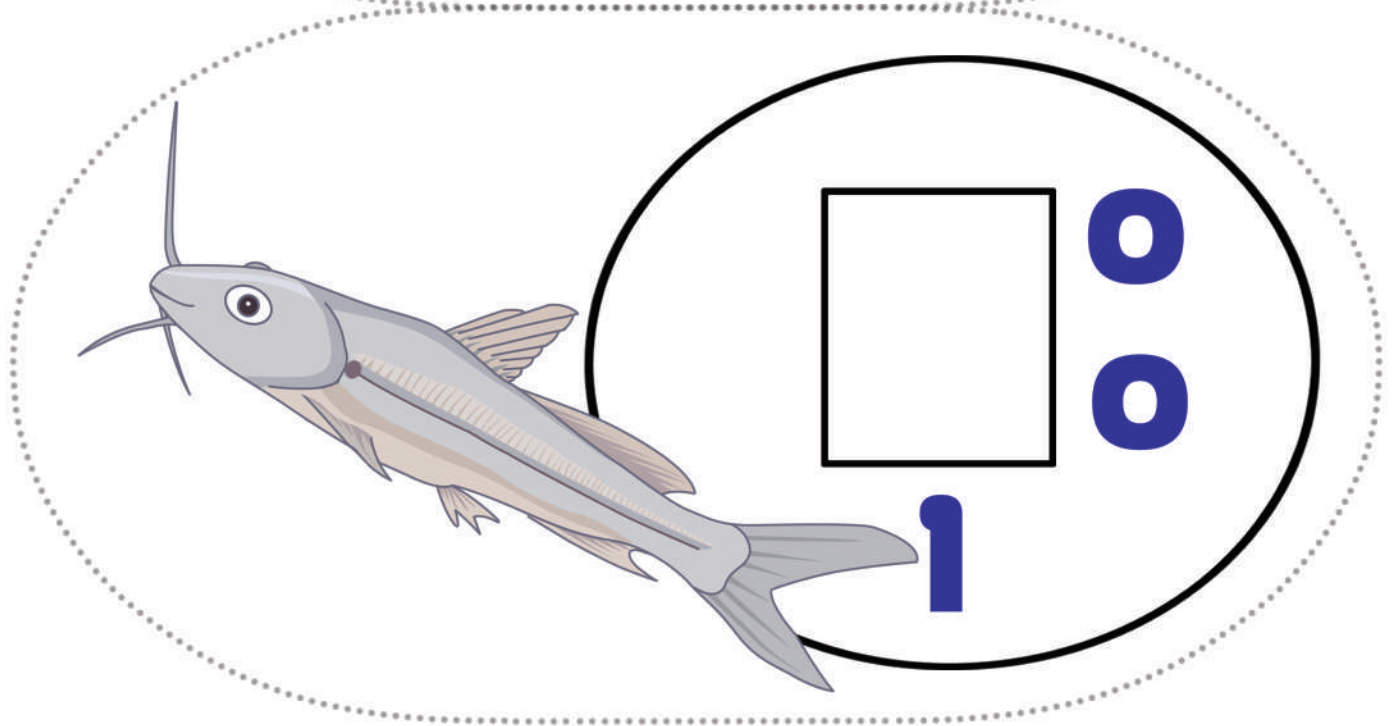
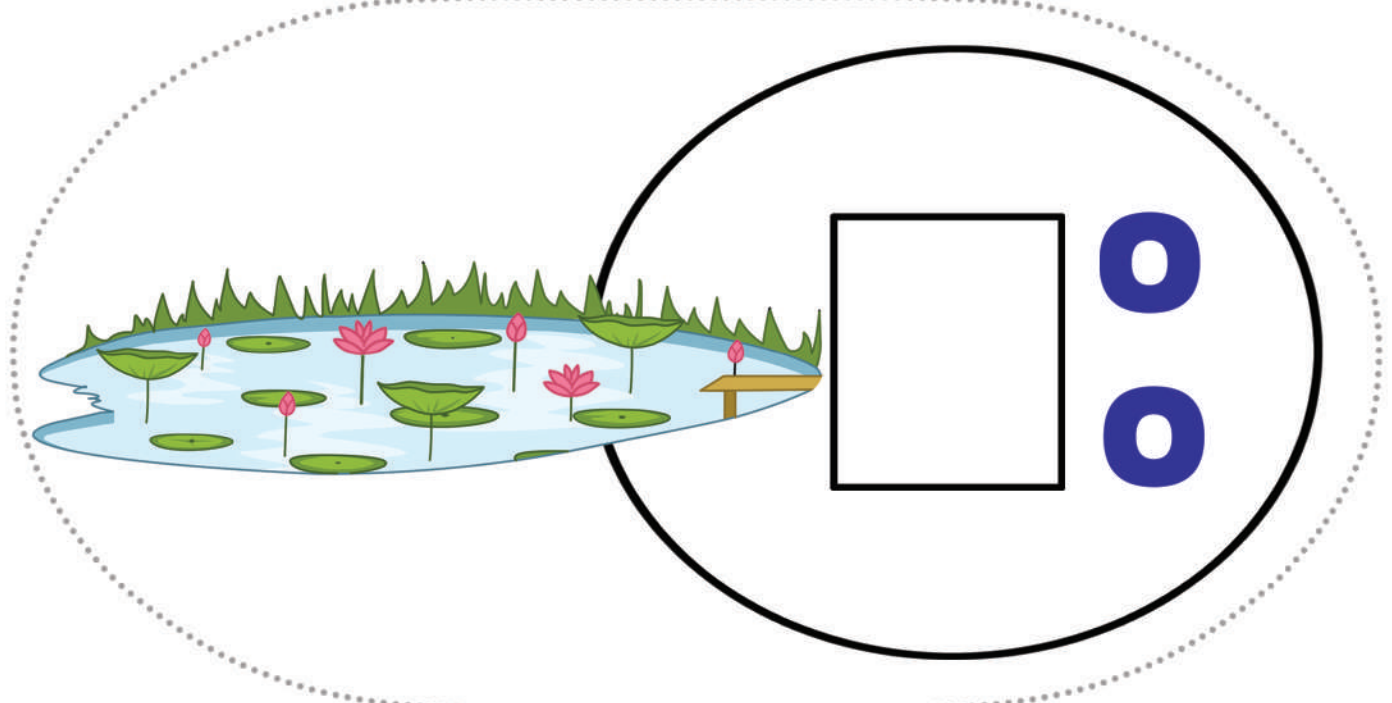
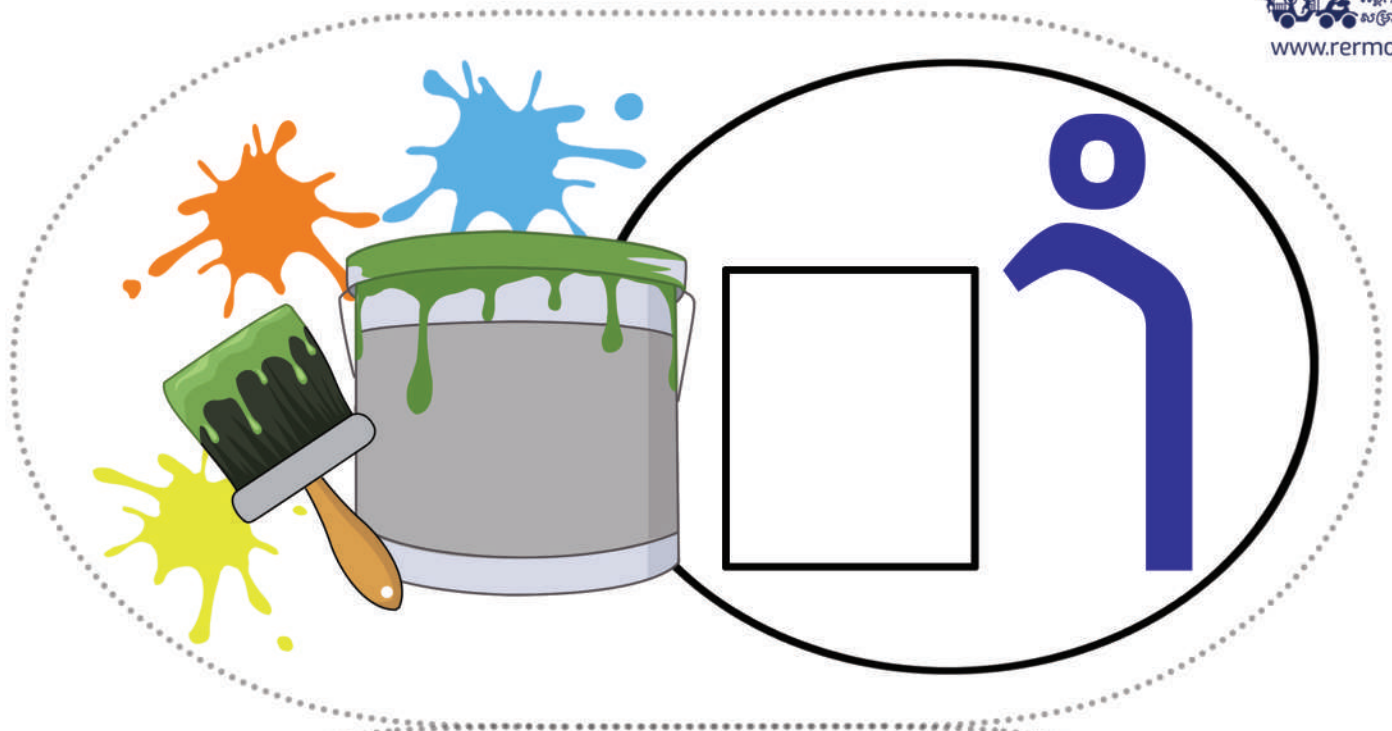


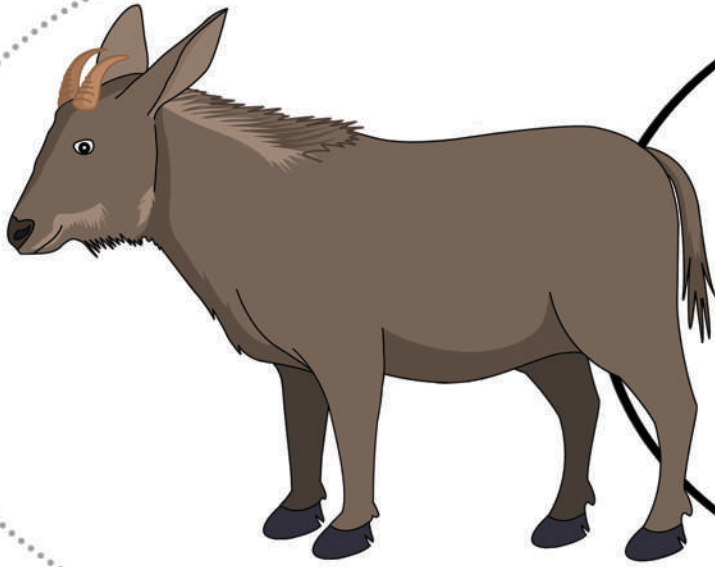
វ
រ
□



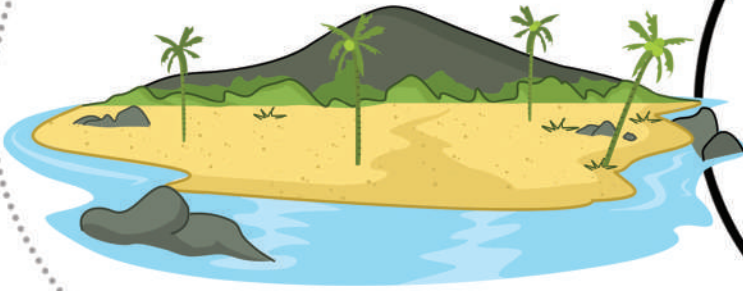
វ
□
រ







ស្រូវ



ស្រូវ

